

Wildlife of Hemis High Altitude National Park

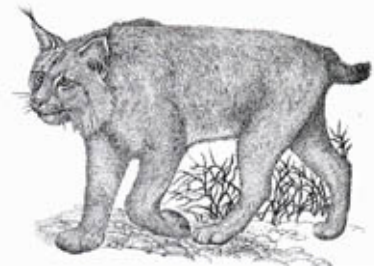
Population estimates may be very rough “guestimates,” and are intended here only to help visitors judge their chances of a sighting

Snow Leopard (Uncia uncia), Ladakhi “Shan”

Endangered. Up to 100 estimated in Hemis Park. Coat appears pale gray with black rosettes. 30-55 kg. ±60 cm. at shoulder. Distinctively long, thick tail. Extremely difficult to spot; look for silhouette along ridgelines.



Kiran Mogan

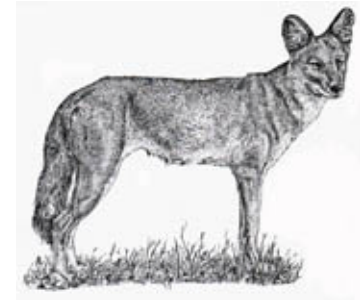


Lynx (Lynx lynx), Ladakhi “Eee”

A few occur in Hemis. 8-31 kg. Coat light brown, tail short, black-tipped. Black ear tufts.

Wild dog, or Dhole (Cuon alpinis) Ladakhi “Fara”

Estimated 25-50 in Hemis. ±17 kg. 50 cm at shoulder. Coat reddish-brown with black tail.



Wolf (canis lupus), Ladakhi “Shanku”

Estimated 25-50 in Hemis (probably greater in number than dhole). Up to 75 kg. 66-100 cm. at shoulder. Coat varies, usually grey or buff.

Wild Mountain Sheep and Goats: Of the four species listed, the visitor is most likely to see blue sheep and Ladakh urial. Look on patches of open grass with cliffs nearby—where they run when threatened by predators. The best time to spot them is in the morning and evening when they graze most actively.

Blue Sheep, or Bharal (Pseudois nayaur), Ladakhi "Napó"

3,000 estimated in Hemis Park. Males ±60kg, ±91 cm high at the shoulder, with bluish-gray coat, light belly, black flank stripes, black markings on legs, lack beard. Cylindrical horns curve outward. Females ±40kg with thin horns. Look for them on slopes throughout Hemis.



Darla Hillard



Ladakh urial (Ovis vignei), Ladakhi "Shapo"

Endangered. ±300 in or near Hemis. 36-87 kg. Coats usually light brown, males with whitish cheek beard and light-colored neck ruff, tail thin and long. Look for them in the mountains along the main Indus valley and its confluence with the Zanskar River.

Ibex (Capra ibex sibirica), Ladakhi "Skin"

Estimated ±50. Coats uniformly brown. Females 30-50kg; males 80-100kg. Males have distinctive scimitar-shaped horns, ±23 cm long. Look for them above Choksti along the Zanskar River



Argali (Ovis ammon hodgsoni), Ladakhi "Nyan"

Endangered. ±25. Coat light brown. Males 95-140kg; distinctive white rump patches and whitish legs/bellies. Tail short. Massive horns of male form an open, outwardly extended spiral. Look for them on the rolling slopes near the Ganda La pass

* * * * *

Common smaller mammals: red fox (Ladakhi "Wahtse"), stone marten ("kohar"), otter ("chu strum"), Himalayan weasel ("lakeymo"), woolly hare ("rihyong"), Himalayan marmot ("Pyah"), mouse hare/pika ("zehbra, Chuah").

Major Birds: golden eagle (*Aquila chrysaetos*), lammergeier (*Gypaetus barbatus*), Himalayan griffon (*Gyps himalayensis*), snow cock (Himalayan and Tibetan) (*Tetraogallus himalayensis* and *T. tibetanus*), chukar partridge (*Alectoris chukar*), chough (red billed and yellow billed) (*Pyrrhocorax pyrrhocorax* and *P. graculus*), crow (*Corvis macrorhynchos*), raven (*C. corax*)